

WAYNE STATE UNIVERSITY

SCHOOL OF MEDICINE

The Brain Research and Imaging Neurosciences Division is located in the University Health Center on the grounds of the Wayne State University School of Medicine Campus and the Detroit Medical Center. The Division's research focus is severe psychiatric disorders and potential new and effective treatments.

Wayne State University (WSU) School of Medicine has the unique distinction of being the largest single campus medical school in the country and is the only medical school in the city of Detroit. The Department of Psychiatry and Behavioral Neurosciences and the Detroit Medical Center (DMC) are one of the major mental health service providers for the city of Detroit and suburban population.



In addition to the B-SNIP study, the Brain Research and Imaging Neurosciences Division are actively recruiting individuals for other studies:

- Those who are *without* mental illness and interested in contributing to scientific research by serving as a community control.
- Those with schizophrenia, schizoaffective or bipolar disorders.

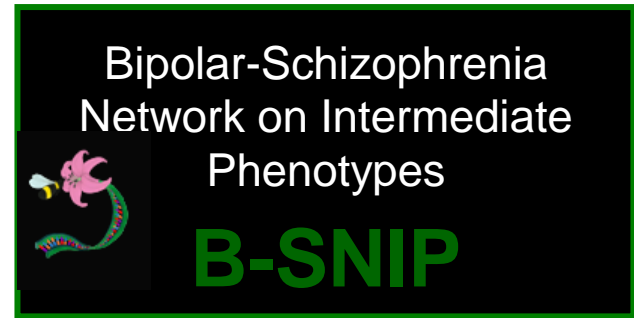
For more information on our other studies please contact:

Mae Nordin:

MNordin@med.wayne.edu

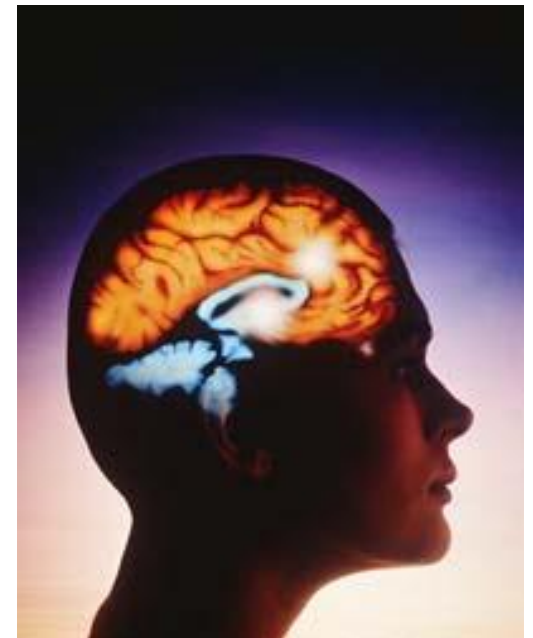
800-650-7837

*Wayne State University School of Medicine
University Psychiatric Center
2751 East Jefferson, Suite 433
Detroit, MI 48207*



A study to understand the genetic basis and brain changes in those with schizophrenia/schizoaffective and bipolar disorder.

WAYNE STATE UNIVERSITY



RESEARCH BACKGROUND

THE CONSORTIUM STUDY

Bipolar disorder and schizophrenia remain among the least understood mental disorders.

Understanding these illnesses can lead to improvements in caring for individuals.

Schizophrenia and bipolar disorder may share common factors and some unique factors that contribute to the occurrences of these diseases.

GENETICS:

- We now have powerful methods to compare the genes of people with bipolar and schizophrenia disorder to those of their biological family members.
- Tests of brain function and structure is measured by using safe state-of-the-art neuropsychological, neuroimaging technology.
- By identifying brains that are related and have a genetic tendency to bipolar and schizophrenia disorder, researchers can begin to understand how genetics translate into clinical presentation.
- These new techniques, used together, will hopefully lead to the identification of the genes associated with abnormal brain function in bipolar and schizophrenia.

Similar techniques are producing break-throughs in the fight against other illnesses such as Huntington's and Alzheimer's diseases.

Identifying the genes that cause bipolar and schizophrenia is the first step toward new, more effective treatments and ultimately possible prevention in people who may be at risk.

WSU IS SEEKING THESE VOLUNTEERS

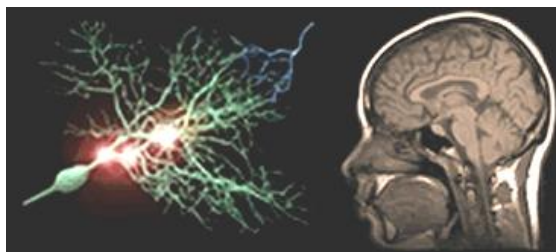
PATIENTS & FAMILY PARTICIPATION

Biological siblings, children, or parents of a person with schizophrenia or bipolar.

HEALTHY VOLUNTEER PARTICIPATION

Community members with no history of major mental illness or family history of schizophrenia/schizoaffective or bipolar disorder

Excluded from the study are people younger than 15 years of age and older than 65, people with mental retardation, and people with serious medical problems or prolonged drug or alcohol abuse.



PROCEDURES

All procedures are painless and consist of the following:

Clinical Interviews: Conversations with members of the research staff to gather background information.

Neuropsychological Testing: Simple tests of memory, attention & other brain processes.

Laboratory Tests: A small sample of blood will be analyzed to study the genetic component

Neuroimaging: A safe, non-radioactive brain scan will be administered.

Neurophysiologic Tests: Tests of brain waves such as EEG and eye movement tests will be administered.

COMPENSATION

Each participant can earn up to \$200 upon completion of the study. There is no charge for any test. Whenever possible, we will assist with free transportation and lodging for participants living outside the immediate hospital area.

For more information, please contact:

Mae Nordin:

MNordin@med.wayne.edu

800-650-7837

B-SNIP study Recruiters
Wayne State University School of Medicine
University Psychiatric Center, Suite 433
2751 East Jefferson
Detroit, MI 48207

<http://www.B-SNIP.org>